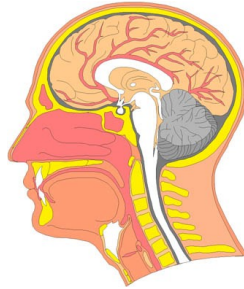


Communication and Swallowing with PSP/CBD
Megan DePuy, MBA, MS, CCC-SLP
Private Speech Pathologist



PSP and CBD both affect strength and coordination of face and throat muscles responsible for speech and swallowing.

Speech

- Hypokinetic dysarthria- Quiet, breathy voice. Quick pace of speech.
- Spastic Dysarthria- Quiet, strained voice quality caused by stiff muscles

Evaluation:

Speech-Language Pathology Evaluation

Treatment:

Speech Therapy for pacing, loudness and articulation strategies/exercises.
LSVT

Swallowing

Risks:

- Difficulty with Self-Feeding
- Control of Oral-Motor Articulators responsible for preparation of food for safe swallow.
- Pharyngeal control of food/liquids and risks of aspiration.

Evaluation:

Fiberoptic Endoscopic Evaluation of Swallowing
Modified Barium Swallow
Bedside Evaluation of Swallowing

Treatment:

Speech Therapy for exercises, diet management, strategies to keep people safe from getting Aspiration PNA.